

Notes on Chalcidoidea from Canary Islands (Hymenoptera. I. A new species of Plutothrix Först. (Pteromalidae).

by

Karl-Johan Hedqvist

SUMMARY

The autor describes a new species of the genus *Plutothrix* Först. (*P. canariensis* sp. n.). The new species is similar to *Plutothrix trifasciatus* (Thoms.) and the autor gives the difference. *P. canariensis* sp. n. is collected on Tenerife.

Notas sobre Chalcidoidea de las Islas Canarias (Hymenoptera). I.
Una nueva especie de *Plutothrix* Först. (Pteromalidae).

RESUMEN

El autor describe una nueva especie de *Plutothrix* Först. (*P. canariensis* sp. n.). La nueva especie es similar a *Plutothrix trifasciatus* (Thoms.) y el autor da las diferencias. *P. canariensis* sp. n. ha sido colectada en Tenerife.

Under above title the author intends to contribute to the fauna of Chalcids from Canary Islands.

Plutothrix canariensis sp. n.

Female: Dark brown strongly tinged with purple. All sutures on thorax tinged with green. Antenna dark brown with scapus and pedicellus dark yellowish brown. All legs yellowish white with hind coxae of the same colour as thorax and all femora distally brownish annulated. Wings with tint of yellow, fore wing brown maculated (fig. 1 C).

Head wider than thorax. Antennae inserted a little above a level with anterior margin of the eyes. Scapus reaching to median ocellus, 1st funicle joint (fig. 1 B) longer than pedicellus and all funicle joints

twice as long as wide with two rows of sensillae. Malar space nearly half the length of an eye. Head reticulated with clypeus, antennal furrow and a stripe along genal suture smooth. Thorax with strong reticulation on mesoscutum and axillae, scutellum with much finer reticulation than mesoscutum, behind frenum a little stronger. Prepectus with an oblique carina which marks off a triangular smooth area. Propodeum (fig. 1 A) fine reticulation, callus with dense hairs. Gaster elongate, longer than head + thorax, 1st tergite of gaster incised in the middle of posterior margin. Fore wing see fig. 1 C.

Male: Unknown.

Length: 4,2 mm.

Holotype: in coll mea, Canary Isl., Tenerife, april 1987, leg. Thure Palm.

Plutothrix canariensis sp. n. is similar to *Plutothrix trifasciatus* (Thoms.) but differs as follows:

<i>Pl. canariensis</i> sp. n.	<i>Pl. trifasciatus</i> (Thoms.)
Marginal vein nearly as long as postmarginal vein.	Marginal vein much shorter than postmarginal vein.
Dorsellum reticulated.	Dorsellum nearly smooth.
Antennal furrow deep and smooth	Antennal furrow shallow and nearly all over reticulated.
Basal cell all over with hairs.	Basal cell with only two rows of hairs on upper part.

The colour is also different and the fore wing not trifasciate (as in *Pl. trifasciatus*) but trimaculate.

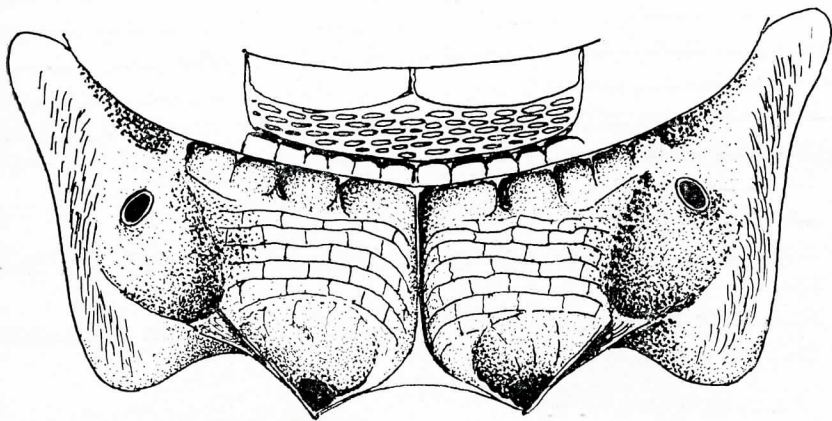
(Recibido el 19 de julio de 1973) Swedish Natural Science Research Council
c/o Dept. of Ent., Swedish Museum of Natural History
S-104 05 Stockholm 50, Sweden.

REFERENCES

GRAHAM, M. W. R. DE V. The *Pteromalidae* of Northwestern Europe (Hymenoptera: Chalcidoidea).—*Bull. Brit. Mus. (Nat. Hist.) Ent., Suppl.* 16, 1-908, 1969.

HEDQVIST, K.-J.: Notes on the *Trigonoderus*-group (Hym., Chalcidoidea).—*Ent. Tidskr.* 89, 35-63, 1968.

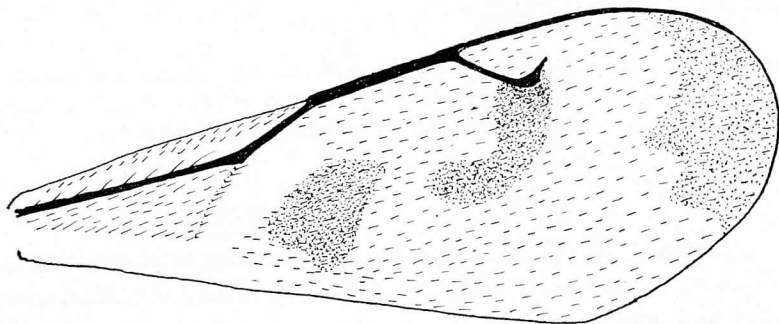
KERRICH, G. J. & GRAHAM, M. W. R. DE V. Systematic notes on British and Swedish *Cleonymidae*, with description of a new genus (Hym., Chalcidoidea).—*Trans. Soc. Brit. Ent.* 12, 265-311, 1957.



A



B



C

Fig. 1 *Plutothrix canariensis* sp. n. hembra, A. Propodeum, B. Part of antenna and C. Fore wing.